



Exclusão de s.as. impacto para o cultivo do milho



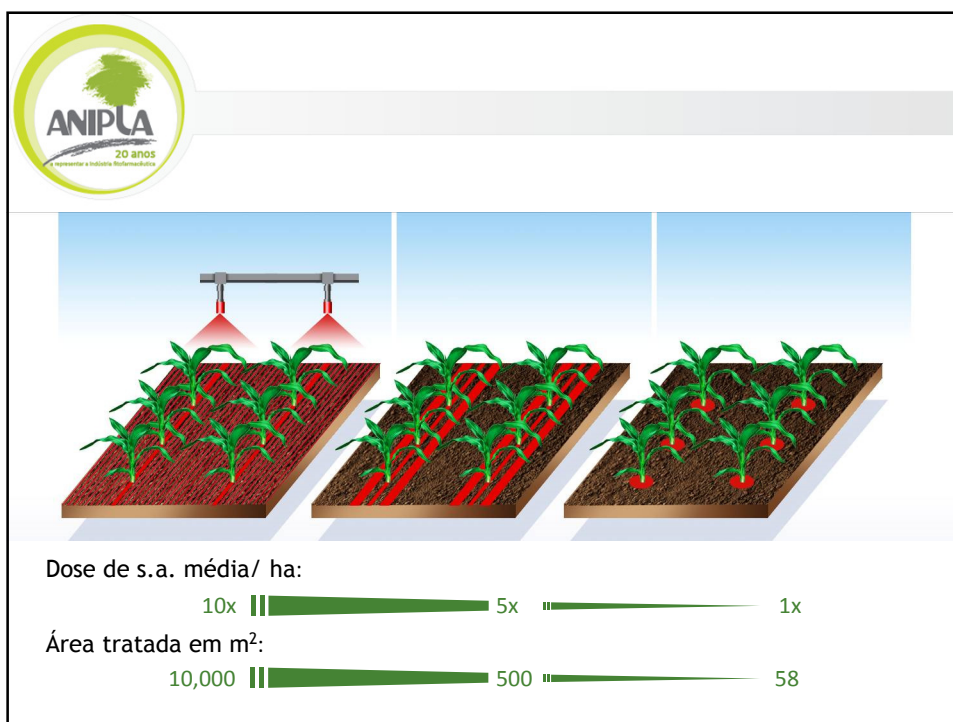
PL- FEV 2014

Contacto: anipla@anipla.com
Web: www.anipla.com

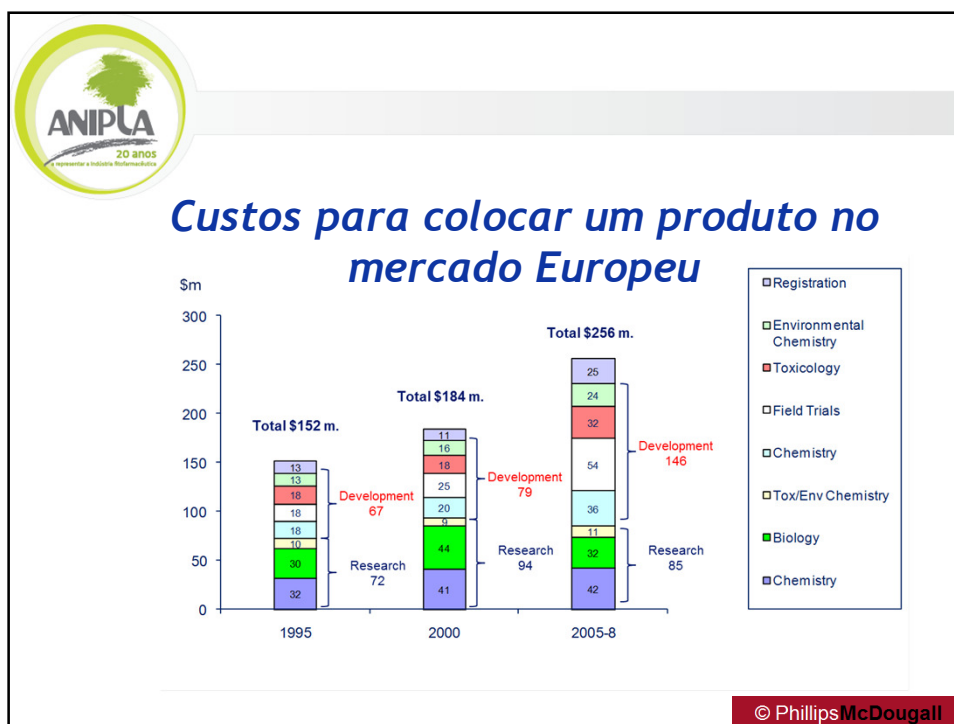
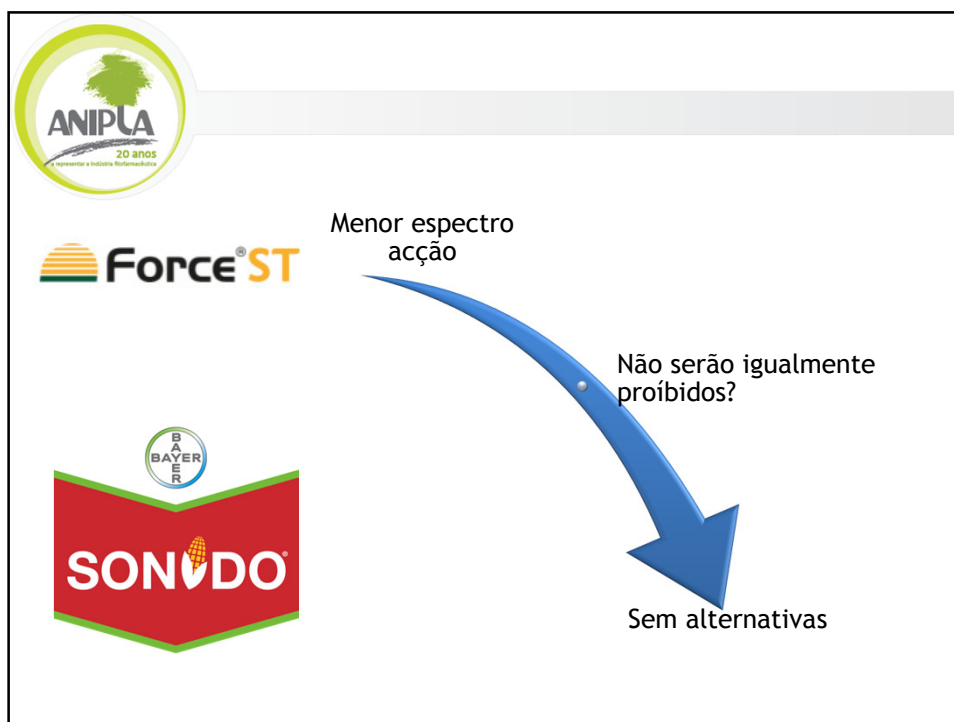


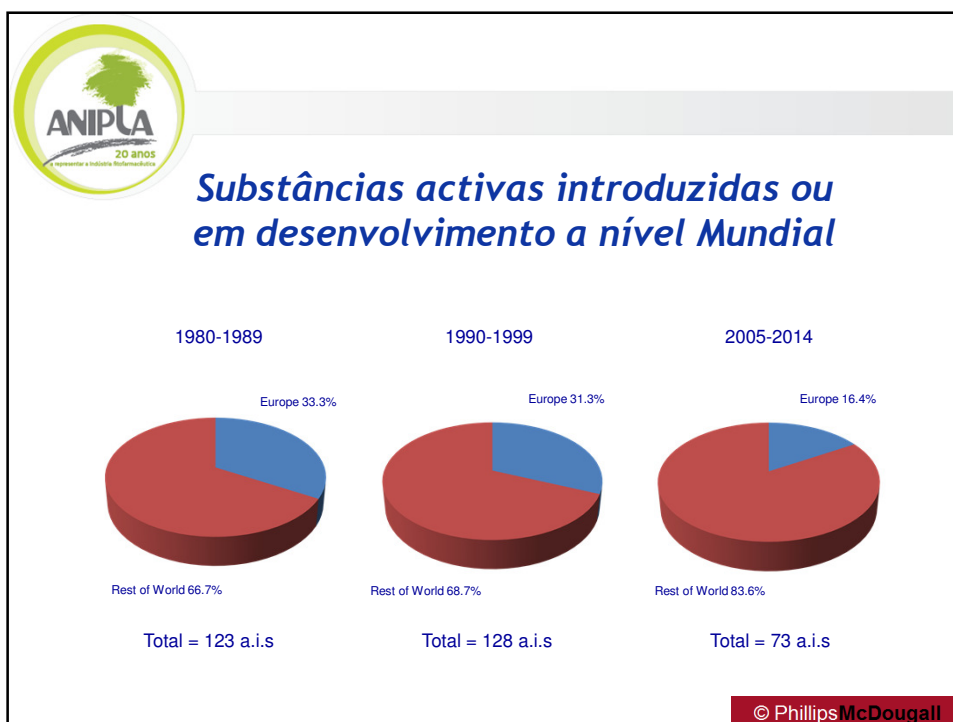
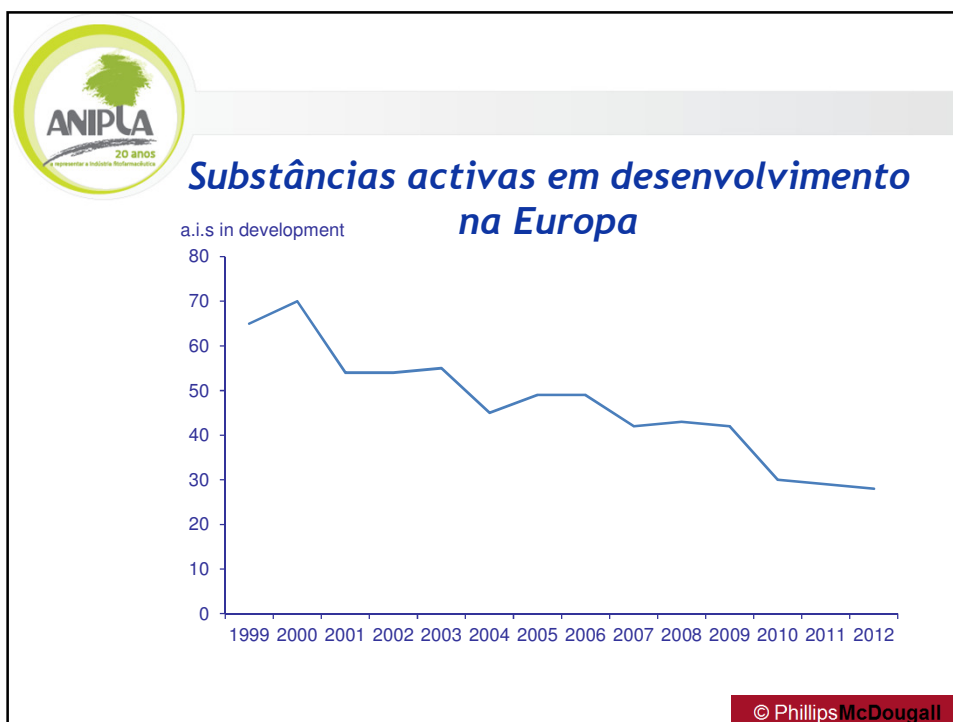
2013 suspensão do tratamento de sementes de milho com imidaclopride, clotiadinina, tiametoxame e fipronil

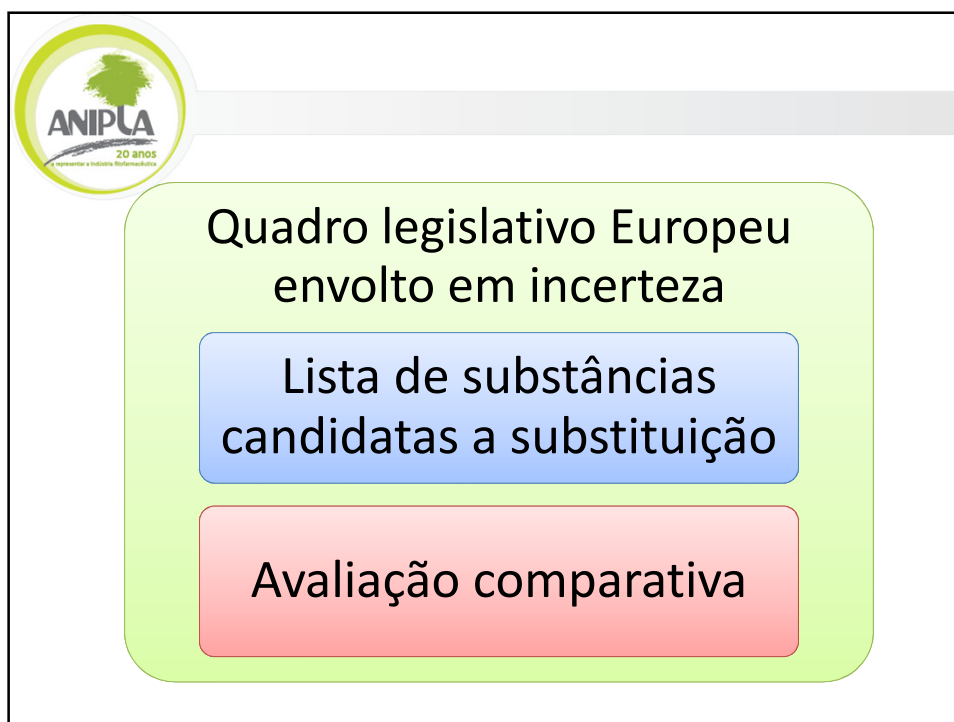


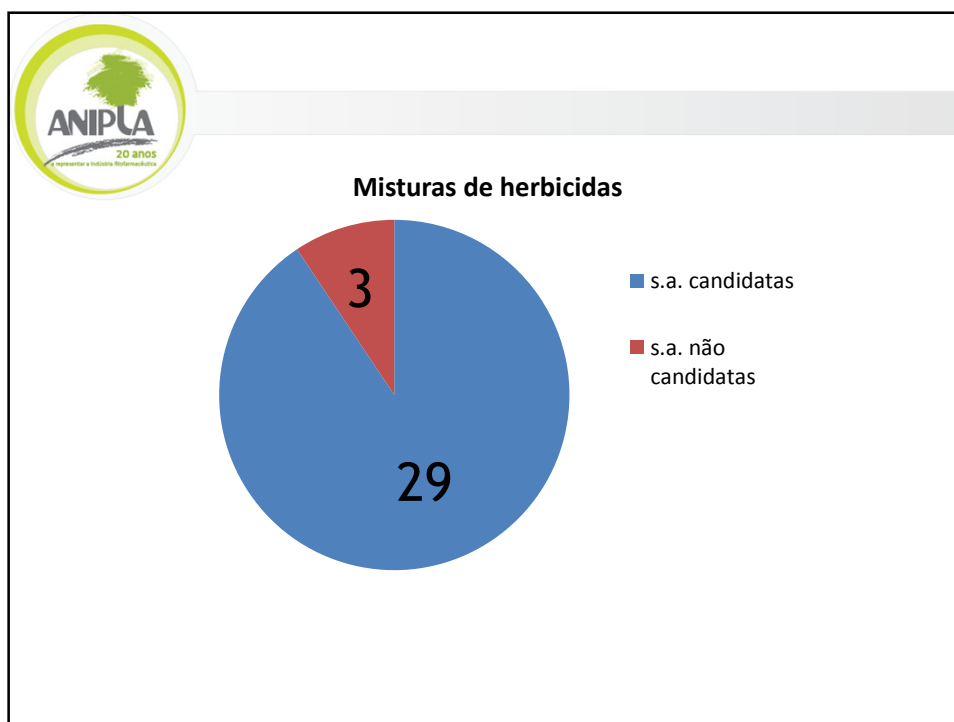















**Como poderá ser competitiva a agricultura
Com limitações dos factores de produção**

