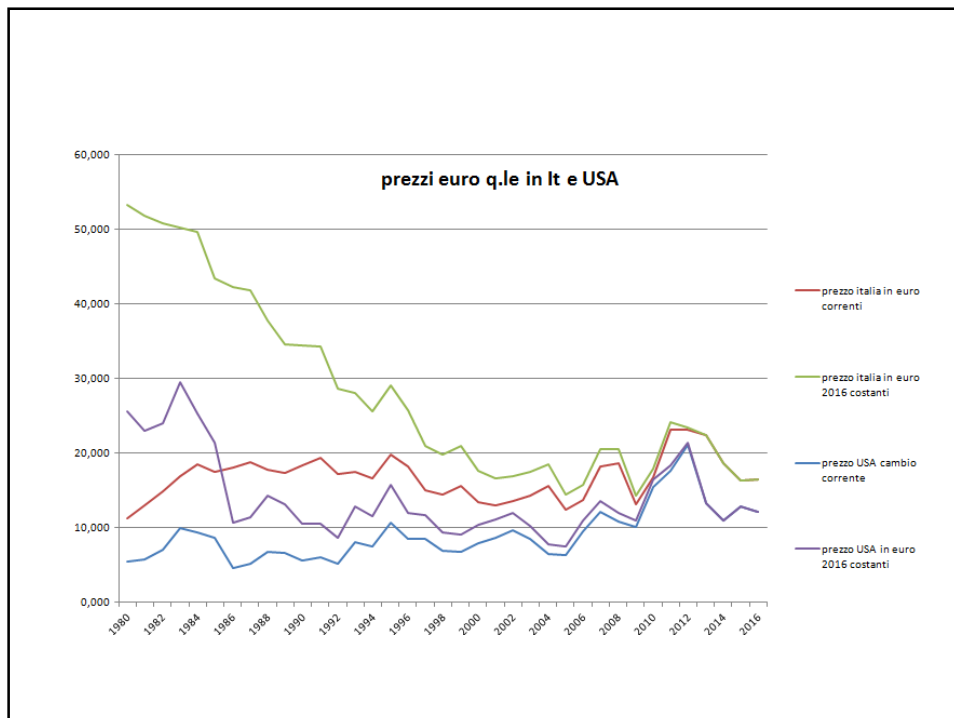
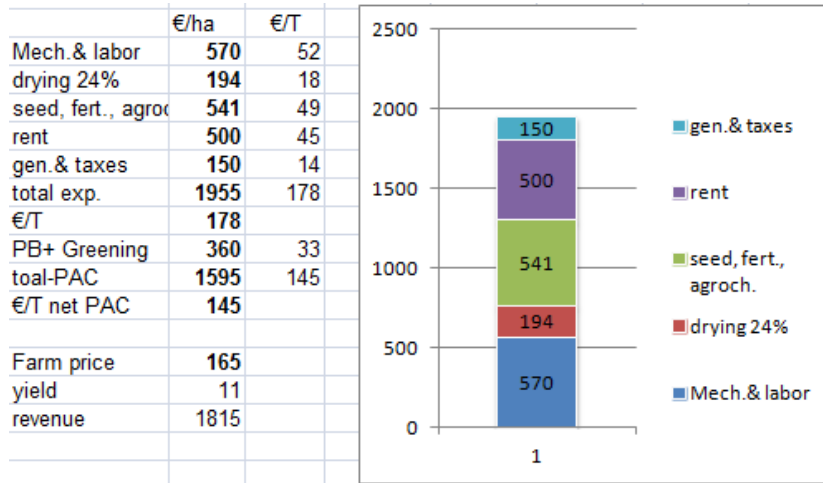


Maize Production cost of a typical Italian farm



Prezzo medio di Bologna aumentato dell'1.1% annuo negli ultimi 15 anni



CAP REFORM

- 1992 MacSharry reform: Decoupling
 - Compensation for the price loss: 63 €/T in year 2000
 - today, taking in account the inflation, it would be 81 €/T
 - For an average yield of 9.5 T/ha it is equal to **769 €/ha**
- CAP 2015 : Decoupling, entitlements and greening
 - Average entitlement for a maize producer was 440 €/ha it will became 220 + greening for a total of about 320 €/ha
 - Payment extended to grapes, fruits, vegetables and dry pasture for a total exceeding 11 Mha
 - One Region for all the Country: impact cushioned by the Irish convergence, but we introduced a principle from which we will not come back.